

How To Read Your Electricity Meter.

The meter at your home monitors your daily power usage. Each month, a meter reader records that usage so you'll be billed accordingly. To find out when you can expect the meter reader, check the "read date" on your electric bill. It is read around the same date every month.



FIGURE 1

Digital:

The digital meter displays numbers in four or five windows. If you have this meter, you simply record the numbers (for instance, in Figure 1, your reading would be 8304).

Dial:

Dial-type meters have four or five clock-like faces numbered in clockwise and counterclockwise directions (see Figure 2.). For these meters, you need to read the dials from right to left, according to the direction of the arrow. Follow these guidelines when reading the dials:

- If the pointer is between two numbers, record the lowest number. (Unless it is 9 and 0, and then you should record the 9.)
- If the pointer is directly on a number, look at the dial to the right. If the pointer is between 9 and 0, record the smaller number. If it is between 0 and 1, record the larger number.
- To calculate usage, read the numbers you recorded for each dial from left to right (our example reading would be 9079).

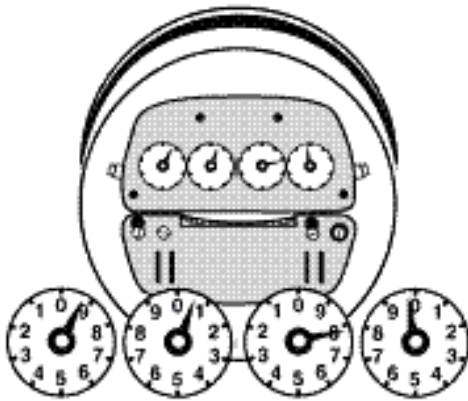


FIGURE 2

Usage:

To determine how many kilowatt-hours (kWh) you have used, subtract the previous reading from the current reading.